



828-683-6022 www.dukepro.com
Toll Free: 1-TOOL-UP-DUKE (866-587-3853)

Model: RSS-2 and RSS-4

Robotic Shock Tube Starters

Duke Pro's RSS-4 is a four-channel shock tube initiator in package designed to mount on a Picatinny rail, or onto a Remotec F6 robot arm.

Powered by the robot, this model can fire thick walled, standard commercial, and mini shock tube with 10,000-shot reliability.



Features:

- Under voltage lockout – unit will not fire until full charge has been reached
- Enhanced safety feature: Daylight visible LED indicators show the channel selected and charge/fire sequence active.
- Aluminum enclosure with stainless steel hardware designed to resist the elements
- Unit is powered from the robot - No battery to change.
- Two or four independent channels, each with high reliability switch tip.
- Has passed military safety requirements and is approved for operational use.
- Can be ordered with Picatinny clamps or the standard ESI/RMx mounting brackets.
- Made in U.S.A.

Specifications

Safety Approvals

Safety tested to military standards. Approved for operational use by all branches of the U.S. military.

Size

: 7.25 x 4.0 x 3.5"

Weight

: 2.5 lbs (RSS-4), 2.2 lbs (RSS-2)

Power Requirements

: 18 ~ 30 VDC, 300 mA (max)

Charge/Fire Time

: 1~2 seconds

Output Firing Pulse Energy

: 2,500 Volts @ 0.8 Joules

Shots per Tip

: 10,000 (typical)

Color

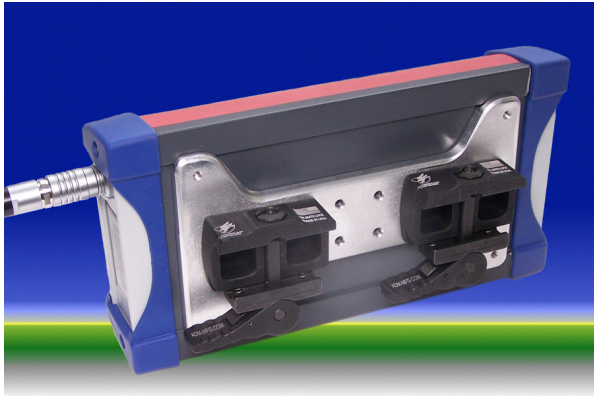
: Red, white, blue, and slate

Temperature Range

: -40°C ~ +85°C



828-683-6022 www.dukepro.com
Toll Free: 1-TOOL-UP-DUKE (866-587-3853)



RSS-2 and RSS-4 Picatinny Clamps

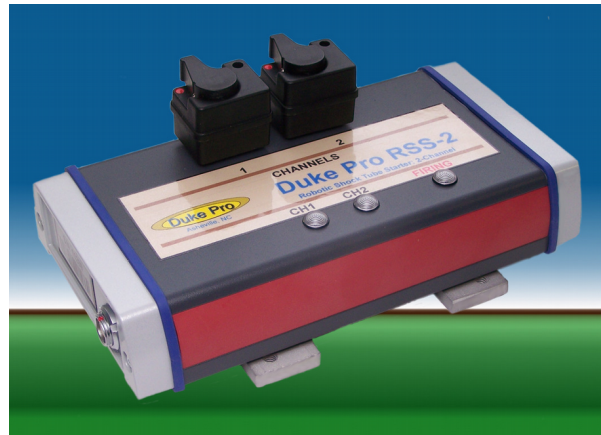
Both the RSS-2 and the RSS-4 employ Picatinny clamps for quick installation and removal. Either model can be ordered with ESI/RMx mounting brackets.

A stainless steel armored cable offers protection for longevity and a push-pull quick-release connector for easy replacement and interchangeability.

RSS-2 and RSS-4 Standard ESI/RMx Mounts

The RSS-2 offers all the same features as the RSS-4 except that it has two firing ports.

Like the RSS-4 it can be ordered with standard ESI/RMx mounts, as shown here.



Ordering Information

Duke Pro Part Number Description

Duke Pro Part Number	Description
RSS-4	Robot mounted 4-channel Shock Tube Starter Includes: Four switch tips Picatinny clamps (optional 3" square tube mounts) Armored cable
RSS-2	Robot mounted 2-channel Shock Tube Starter Includes: Two switch tips Picatinny clamps (optional 3" square tube mounts) Armored cable