



828-683-6022 www.dukepro.com
Toll Free: 1-TOOL-UP-DUKE (866-587-3853)

Features

Model: LWDD

Light Weight Demolition Device

Duke Pro's LWDD is a combination electric initiator and shock tube initiator in an ultra small package designed to fit into a pouch for a Beretta 9mm ammo clip.

Powered by two CR-123 lithium batteries, this model can fire up to 80 electric caps, or thick wall, standard commercial, and mini shock tube. It is also capable of driving the electric breech on PAN disruptor.

- Two button fire control
- Under voltage lockout – unit will not fire until full charge has been reached
- Submersion lockout – unit inhibits charging when submerged below 10 feet
- Combination firing tip contains both electric terminals and shock tube adapter
- Dual firing shock tube tip contains two shock tube fittings
- Tether bar designed for attaching a lanyard
- Daylight visible LED indicators – green for battery voltage okay, and red for ready to fire
- Shunted output terminals
- Polycarbonate enclosure with stainless steel hardware designed to resist the elements
- Easy battery replacement through an o-ring sealed screw plug
- Capable of driving an electric firing pin such as the electric breech on a PAN disruptor
- Easy loading, high retention output terminals accept 20 – 28 Gauge wire
- Has passed military safety tests and is approved for operational use



Specifications

Size	: 4.5" x 1.0" x 1.5"
Weight	: 0.370 lbs (167 grams)
Power Requirements	: Two CR123A Lithium 3 volt batteries (not included)
Charge Time	: 3~5 seconds
Output Firing Pulse Energy	: 375 Volts @ 10 Joules
Blasting Cap Capacity	: 80 standard 2-ohm electric caps
Shots per Battery Set	: 150 (more depending on temperature and time between shots)
Shots per Ceramic Block Assembly	: 2,000 (typical)
Color	: Desert Tan
Temperature Range	: -20°C ~ +85°C (electric output) -10°C ~ +85°C (shock tube output)
Accessories	: Dual Shock Tube Adapter Tip (simultaneous fire)



828-683-6022 www.dukepro.com
Toll Free: 1-TOOL-UP-DUKE (866-587-3853)



Model: LWDD Kit

NSN: 1375-01-666-6854

Light Weight Demolition Device

The LWDD is also offered as a kit that includes

- One LWDD initiator
- One combination electric / shock tube tip.
- A custom pouch with MOLLE straps
- A specialty wrench for changing and storing unused shock tube fittings
- Three shock tube fittings, sizes 2.5mm, 1/8", and 4mm.

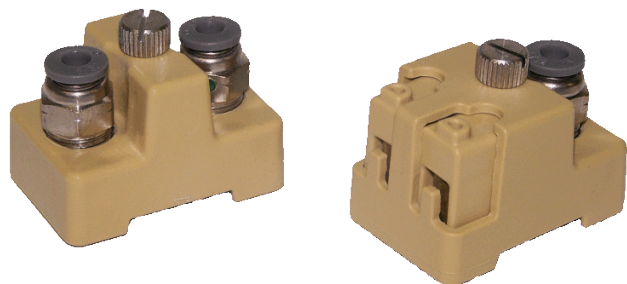
The two required lithium batteries are not included in the kit, thus avoiding HAZMAT requirements and allowing it to be transported by air.

TIPS

Dual shock tube tips are also available. This is ideal for use in any application that requires double capping a charge.

Both a dual tip and a combination tip with 4mm fittings are shown here for comparison.

Dual tips can be ordered with any combination of two shock tube fitting sizes of 2.5mm, 1/8", and 4mm.





Ordering Information

828-683-6022 www.dukepro.com
Toll Free: 1-TOOL-UP-DUKE (866-587-3853)

Duke Pro Part Number	Description
514680	LWDD – Light Weight Demolition Device kit NSN: 1375-01-666-6854 Includes: 514650: LWDD initiator 514680-1: Custom pouch 514680-2: Specialty wrench 514690-1: Fitting for 1/8" shock tube 514690-2: Fitting for 2.5mm shock tube 514690-4: Fitting for 4mm shock tube
514650	LWDD Combination electric initiator. Includes: 514710-1: Combination electric / shock tube tip, 1/8" shock tube fitting Two CR123A batteries
514680-1	Custom Pouch for LWDD initiator (NSN 5140-01-672-5074)
514680-2	Specialty wrench for LWDD initiator
514690-1	Fitting for 1/8" shock tube (white marks)
514690-2	Fitting for 2.5mm shock tube (silver marks)
514690-4	Fitting for 4mm shock tube (green marks)
514690-5	Universal fitting for all shock tube sizes with quick disconnect
514710-1	Combination electric / shock tube tip for LWDD (514650) Includes 1/8" shock tube fitting (514690-1)
514710-2	Combination electric / shock tube tip for LWDD (514650) Includes 2.5mm shock tube fitting (514690-2)
514710-4	Combination electric / shock tube tip for LWDD (514650) Includes 4mm shock tube fitting (514690-4)
514720-1	Dual tip with two 1/8" shock tube fittings (514690-1)
514720-2	Dual tip with two 2.5mm shock tube fittings (514690-2)
514720-4	Dual tip with two 4mm shock tube fittings (514690-4)
514720-12	Dual tip with one 1/8" and one 2.5mm shock tube fittings (514690-1 and 514690-2)
514720-14	Dual tip with one 1/8" and one 4mm shock tube fittings (514690-1 and 514690-4)
514720-24	Dual tip with one 2.4mm and one 4mm shock tube fittings (514690-2 and 514690-4)
514720-5	Dual tip with two universal shock tube fittings (514690-5)